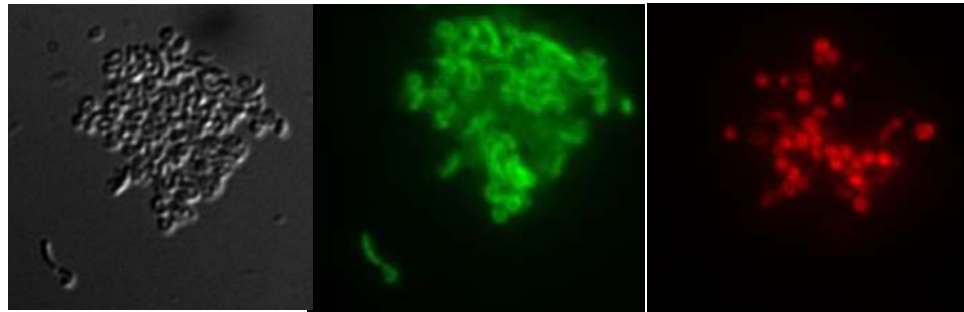


Drinking Water as a Route of Exposure to *H. pylori*



Charlotte D. Smith

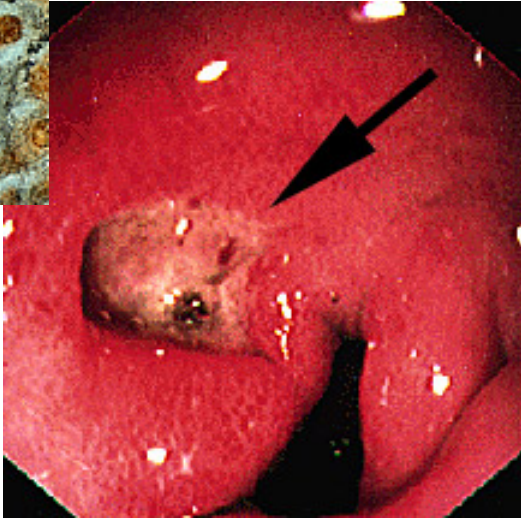
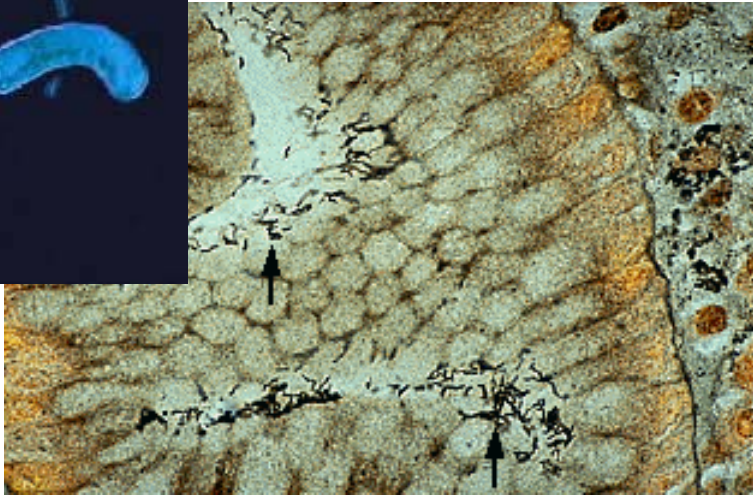
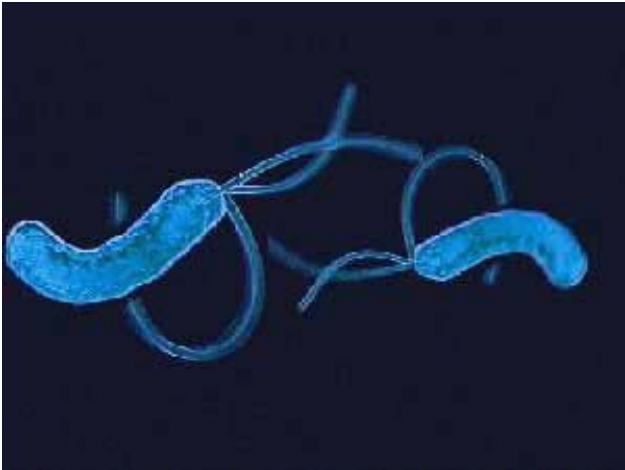
University of California – Berkeley

Environmental Health Sciences Division

International Water Supply and Sanitation Symposium

April 10, 2009

Pathology





Previously Identified Routes of Transmission:

- ✓ Oral-Oral
- ✓ Gastro-Oral
- ✓ Fecal-Oral
- ✓ Zoonotic

Oral behaviors

Crowding



Pets

Vomit



Fecal matter



Identified by PCR in Drinking Water Systems



Acknowledgments

Partially funded by: USEPA STAR Fellowship F09D40688

UC Berkeley Dissertation Committee:

Bob Spear, Michael Bates, Lee Riley

USEPA Mentors

Nick Ashbolt, Kevin Oshima

