

# ESPM 115 C

## FISH ECOLOGY

Fall 2009

3 units

Lecture: Tu Th 10-11; 306 Wellman

Lab: Th 1-4; 36 Mulford

Course No. 29157 (lecture) & 30577 (lab)

All photographs courtesy of Dr. Robert Leidy



*Oncorhynchus mykiss*



*Gila crassicauda* (extinct)



*Catostomus occidentalis*



*Mylopharodon conocephalus*



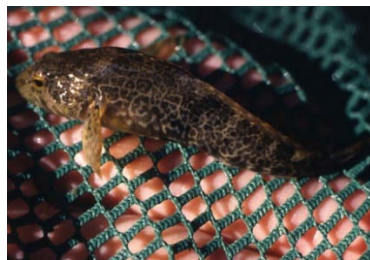
*Pogonichthys macrolepidotus*



*Ptychocheilus grandis*



*Archoplites interruptus*



*Cottus gulosus*



*Oncorhynchus mykiss* (resident)

Dr. Stephanie Carlson

scarlson@nature.berkeley.edu

Department of Environmental Science, Policy & Management

This course will provide students with an introduction to fish ecology, with particular emphasis on the identification and ecology of California's inland and anadromous fishes. Lectures will emphasize the physical, biotic, and human-related factors affecting the distribution and abundance of these fishes.